



## AMP2420 2400~2500 MHz, 2 Watt Amplifier

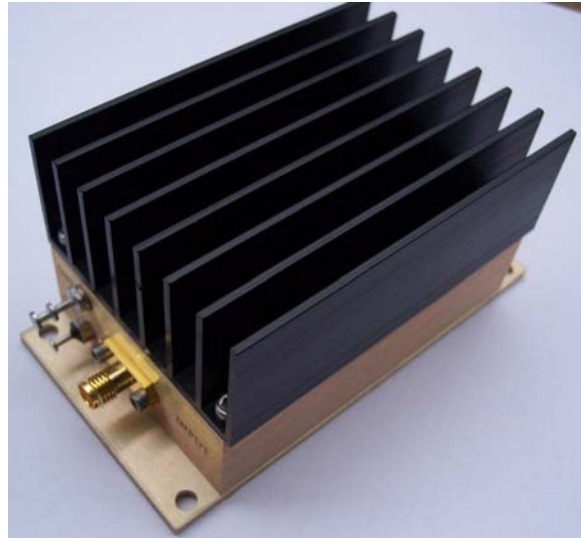
### Features

- Frequency Range: 2400-2500 MHz
- Gain: 28 dB
- P<sub>1dB</sub>: +33 dBm
- IP3: +42 dBm
- Noise Figure: 6 dB
- DC Power: 12 V
- SMA Connectors

### Description

A true 2 Watt amplifier capable of 100% duty cycle.

This AMP2420 is a 28 dB gain +33 dBm output RF Amplifier that can be used with 2.4 GHz equipment where high gain is required. Ideally suited for wireless video transmission systems or Lab use.



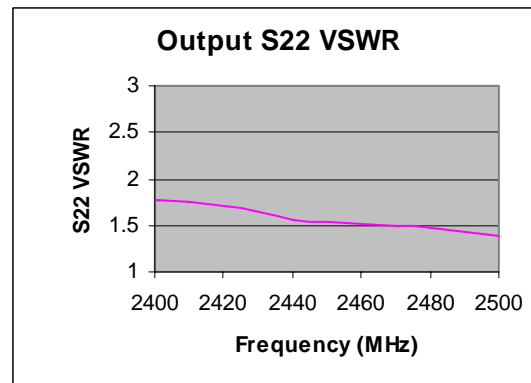
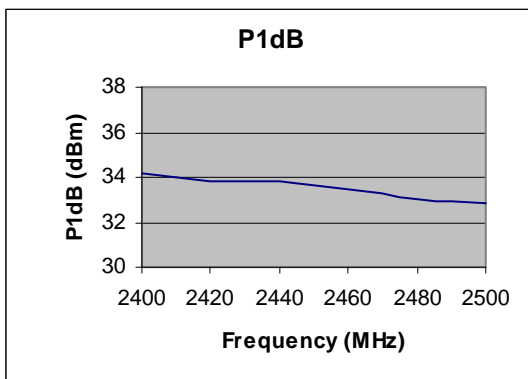
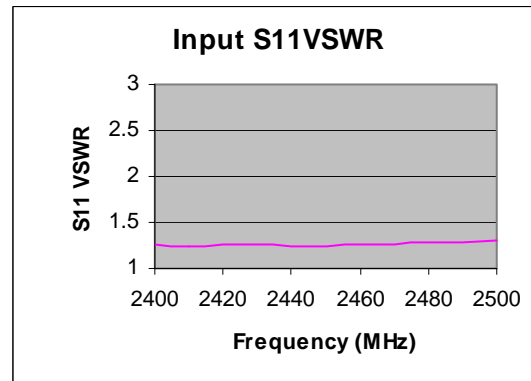
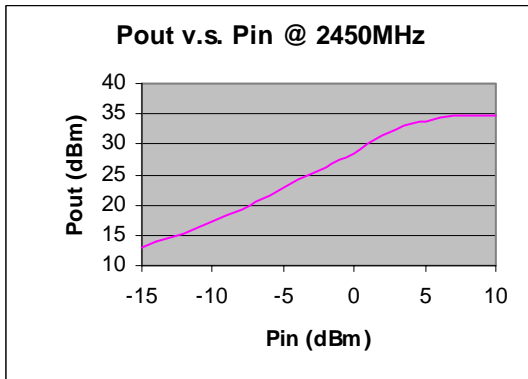
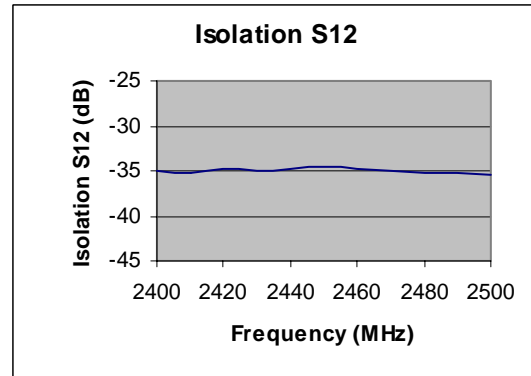
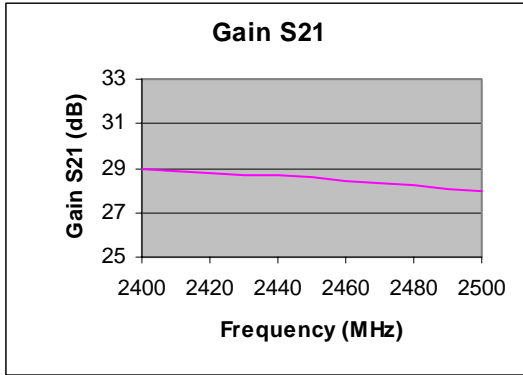
### Electrical Specifications @ +25 °C, Z<sub>S</sub> = Z<sub>L</sub> = 50 Ohms

Parameter	Unit	Minimum	Typical	Maximum
Frequency Range	MHz	2400		2500
Large Signal Gain	dB	27	28	
P <sub>1dB</sub>	dBm		+33	
P <sub>SAT</sub>	dBm		+34.5	
IP3	dBm		+42	
Reverse Isolation S <sub>12</sub>	dB		-23	
Noise Figure f = 2450MHz	dB		6	
VSWR    Input VSWR Output VSWR			1:1.2 1:2.0	
DC Power Supply	V	11	12	15
Supply Current	mA		800	



# AMP2420 2400~2500 MHz, 2 Watt Amplifier

## Typical Performance @ +25 °C



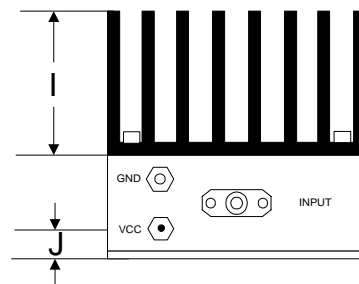
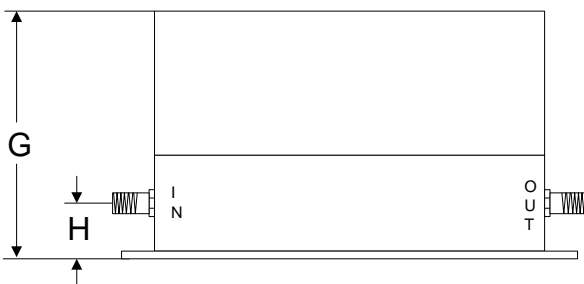
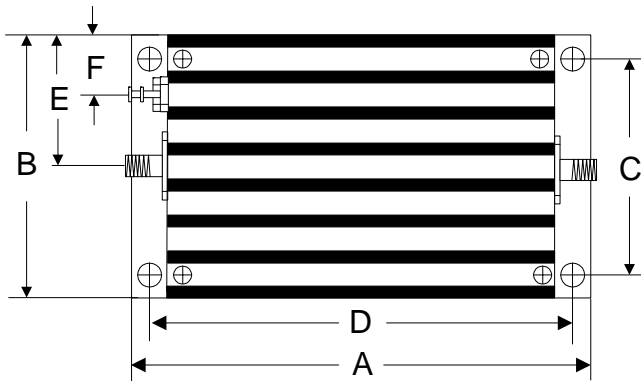


# AMP2420 2400~2500 MHz, 2 Watt Amplifier

## Absolute Maximum Ratings

Parameter	Absolute Maximum
RF Input Power	+13 dBm
Supply Voltage	+17 V
Operating Temperature	-40 °C to +70 °C
Storage Temperature	-55 °C to +100 °C

## Outline



	A	B	C	D	E	F	G	H	I	J
Inch	3.750	2.000	1.750	3.400	1.000	0.400	1.813	0.375	1.000	0.238
mm	92.25	50.80	44.45	86.36	25.40	10.16	46.05	9.53	25.40	6.03