

HPA Series

300-400MHz 5W RF Power Amplifier

Features

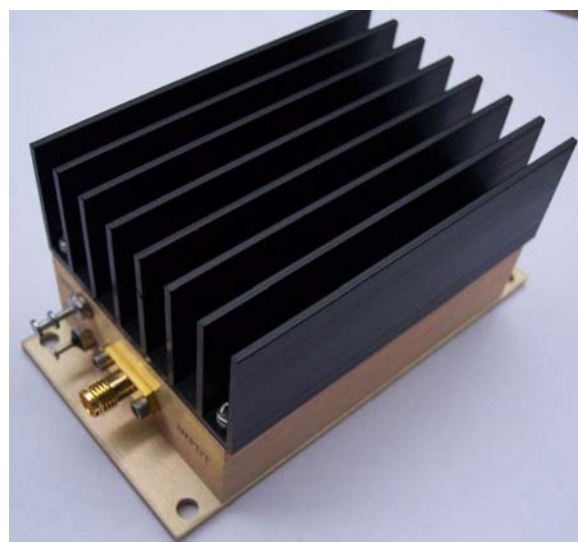
- Frequency Range: 300-400MHz
- Gain: 16dB
- P_{out}: +37dBm
- IP3: +50dBm
- Noise Figure: 8dB
- DC Power: 9V to 24V
- SMA Connector

Performance measured @ 350MHz

Description

HPA-350 is a 5 Watt (+37dBm) output RF Power Amplifier operating from single 9V-24V DC power supply with frequency from 300MHz to 400MHz.

Picture

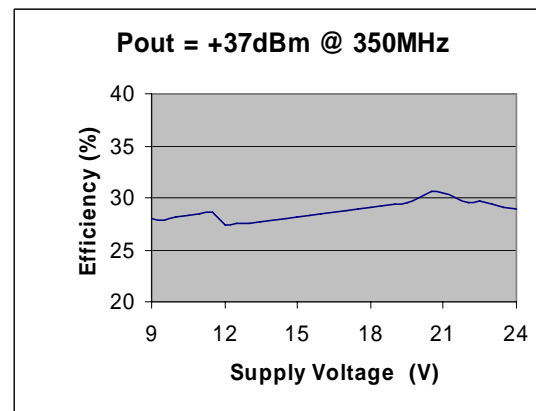
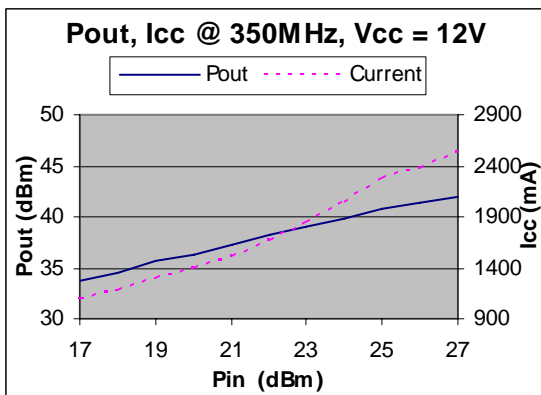
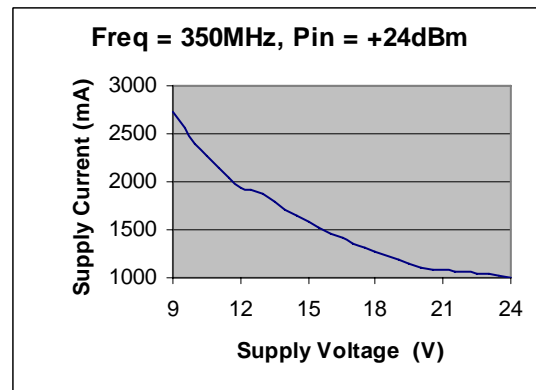
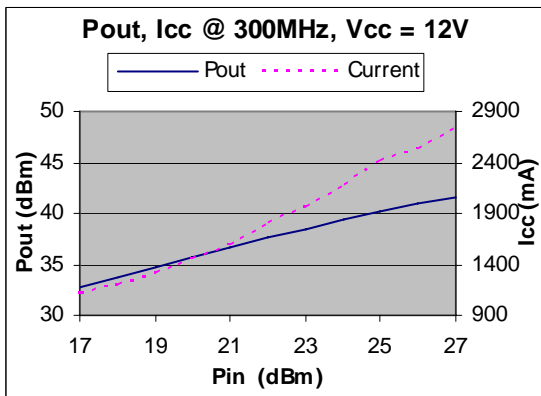
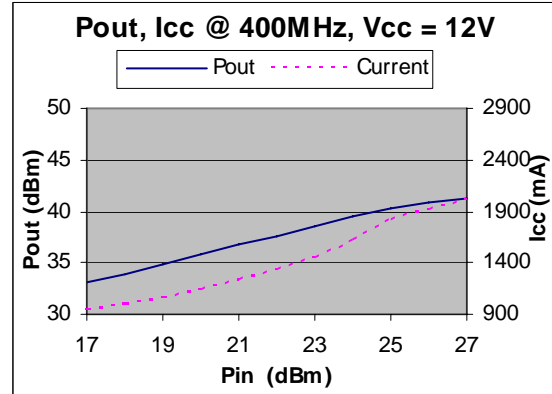
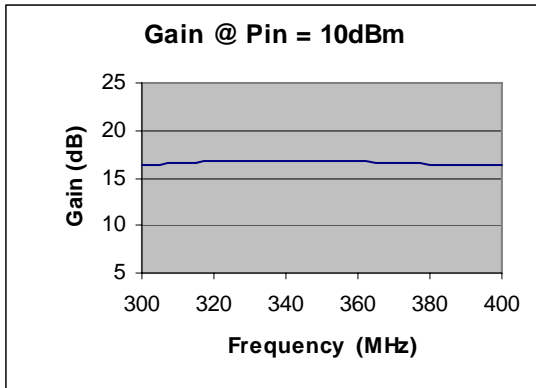


Electrical Specifications @ +25 °C, Z_s = Z_L = 50 Ohms, V_{cc} = 12V

Parameter	Unit	Minimum	Typical	Maximum
Frequency Range	MHz	300		400
Small Signal Gain	f = 300MHz		16	
	f = 350MHz		16	
	f = 400MHz		16	
Output Power P _{out}	dBm		+37	
IP3	dBm		+50	
Reverse Isolation	dB		-23	
Noise Figure	dB		8	
Efficiency at P _{out} = +37dBm	%		27	
DC Power Supply	V	9	12	24
Supply Current	mA		2000	



Typical Performance @ +25 °C



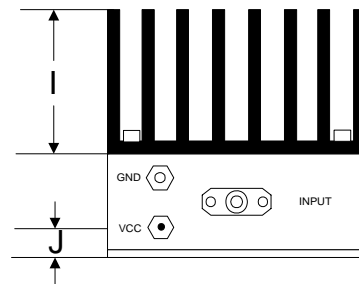
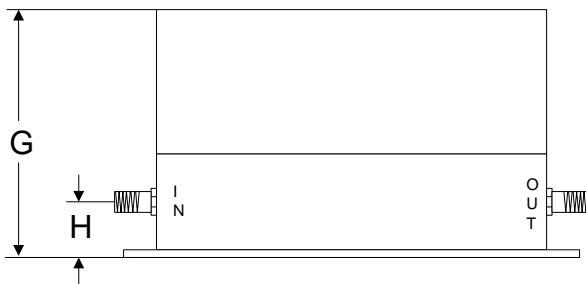
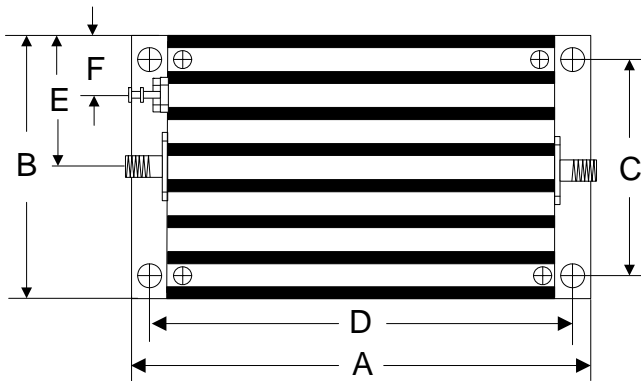
HPA Series

300-400MHz 5W RF Power Amplifier

Absolute Maximum Ratings

Parameter	Absolute Maximum
RF Input Power	+30dBm
Supply Voltage	+25V
Operating Temperature	-30 °C to +65 °C
Storage Temperature	-55 °C to +100 °C

Outline



	A	B	C	D	E	F	G	H	I	J
Inch	3.750	2.000	1.750	3.400	1.000	0.400	1.813	0.375	1.000	0.238
mm	92.25	50.80	44.45	86.36	25.40	10.16	46.05	9.53	25.40	6.03