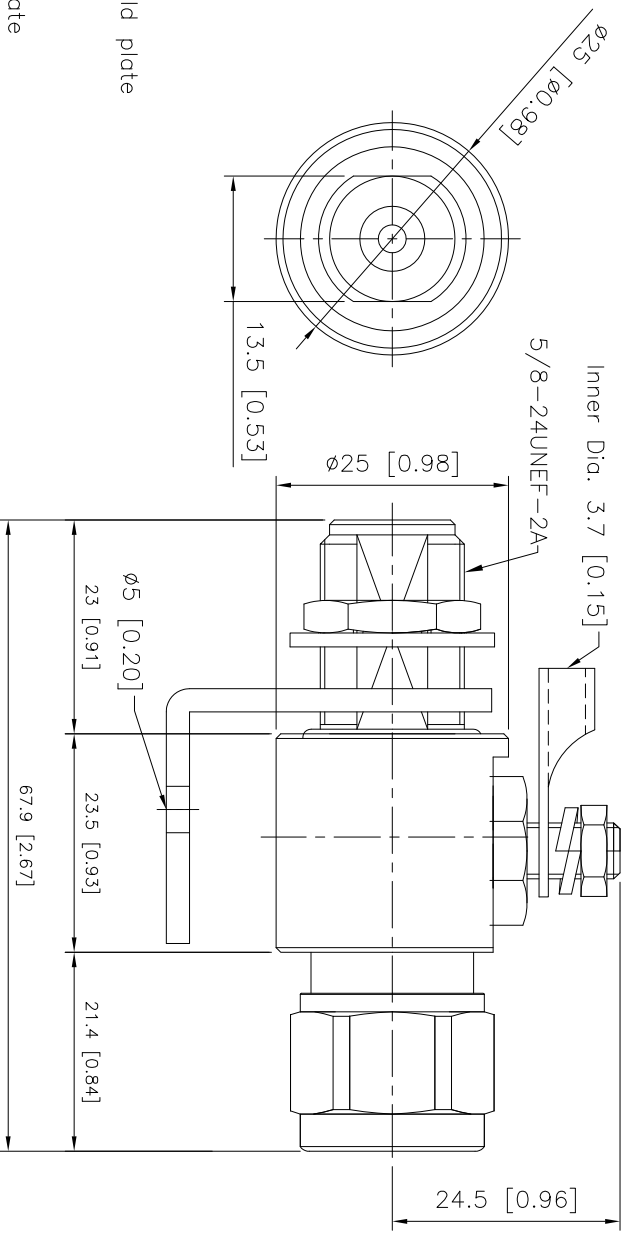


4	No.	Revision	Date	6	Name



**SPECIFICATIONS**

1. Mechanical
  - Mating life : 500 Min.
  - Panel mounting torque : 10+2N.m
  - Materials and Finish
    - \* Center Contact : Beryllium Copper/Gold plate
    - \* Body : Brass/Nickel plate
    - \* Insulator : PTFE Teflon
    - \* Gasket : Silicon Rubber
    - \* Nut & Lock Washer : Brass/Nickel plate
2. Electrical
  - Impedance : 50ohm
  - Frequency range : DC~6GHz
  - V.S.W.R. : 1.35 Max.
  - Insertion Loss : 0.4dB Max.
  - Spark-over voltage : 250V
  - Surge life : 10times, 5kA(8x20µs)
  - Insulation resistance : 5GΩ Min.
  - Contact resistance :
    - center contact : 2mΩ Max.
    - outer contact : 0.5mΩ Max.
3. Environmental
  - Operating Temperature : -30°~100°
  - ROHS complied

NO.	DESCRIPTION	Q'ty	MATERIAL	FINISH	REMARKS.
PARTS No.	<b>50583</b>	NAME	<b>Lightning Arrester</b>		
MATERIAL	FINISH	TOLERANCES OTHERWISE SPEC. ±0.05	UNIT	ANGLES ±1°	CHECKED
SCALE		mm	DESIGNF		DATE.

**CUSTOMER**  
**SHIREEN INC.**  
 12910 Cloverleaf Center Dr Ste 110  
 Germantown, MD 20874 USA

A

B

C

D

1

2

3

4

5

6