

1 2 3 4 5 6 7 8

REVISIONS		
ISS	ZONE	DESCRIPTION\PER REQUEST\DATE
B	B-2	NO.6

F

E

D

C

B

A

F

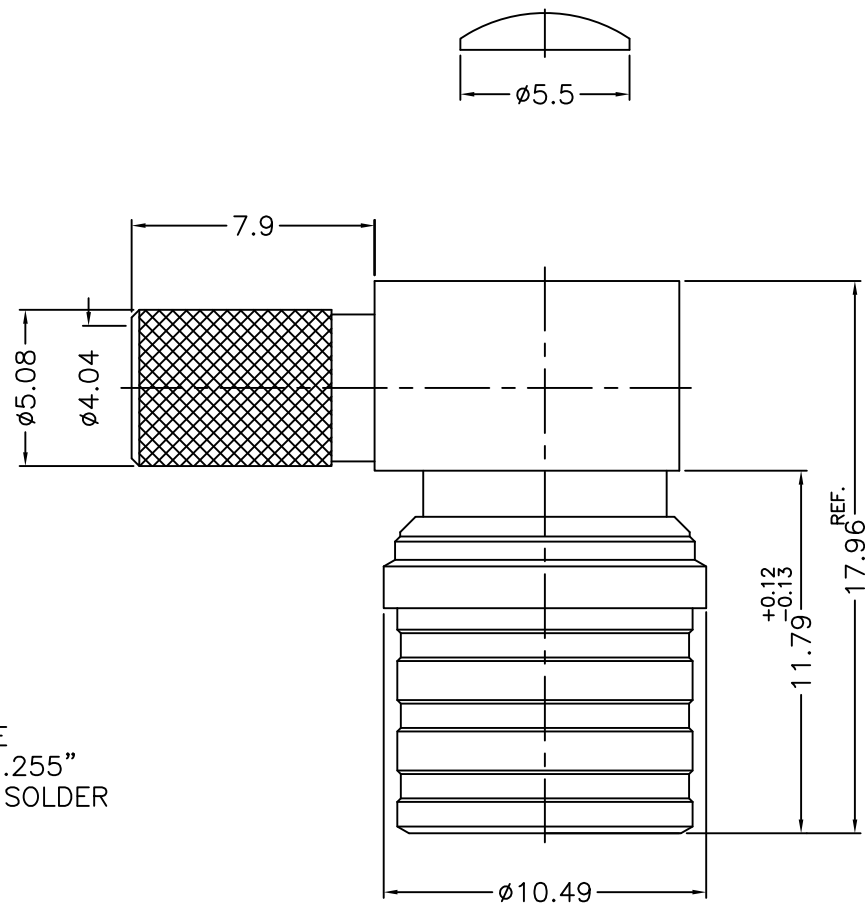
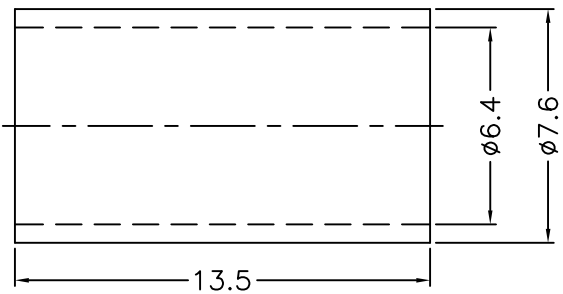
E

D

C

B

A



1. CRIMPED FERRULE
HEX CRIMP SIZE .255"
2. CONTACT PIN TO SOLDER

NOTES: FINISH (PLATING THICKNESS IN MICRO-INCHES)

1. BRASS
2. PHOSPHOR BRONZE
3. ALBALOY PLATING (COPPER-TIN-ZINC) PL. 80 MIN. THICK
4. GOLD PL. 30 MIN. THICK OVER NICKEL PL. 50 MIN. THICK OVER COPPER PL. 50 MIN. THICK
5. TEFLON

RoHS COMPLIANT

7	FERRULE	NOTE 1	NOTE 3	1	
6	COVER	NOTE 1	NOTE 3	1	
5	CONTACT PIN	NOTE 1	NOTE 4	1	
4	SHELL	NOTE 1	NOTE 3	1	
3	OUTER CONTACT	NOTE 2	NOTE 3	1	
2	INSULATOR	NOTE 5	NATURAL	1	
1	BODY	NOTE 1	NOTE 3	1	
NO.	DESCRIPTION	MATERIAL	FINISH	Q'TY	DRAWING NO.

DIMENSIONS ARE IN MILLIMETERS

UNLESS OTHERWISE SPECIFIED TOLERANCES

- 0.5-6 = ±0.2
- 6-30 = ±0.4
- 30-120 = ±0.6
- 120-315 = ±1
- 315-1000 = ±1.6
- 1000-2000 = ±2.4

PART NO.	
APPROVED	DATE
CHECKED	DATE
DRAWN	DATE

SHIREEN INC. 12910 Cloverleaf Center Dr Ste 110 Germanatown, MD 20874 USA	
TITLE	CON-2101 QMA Male Right Angle for RFC240
DRAWING NO.	
FILE NO.	

1 2 3 4 5 6 7 8