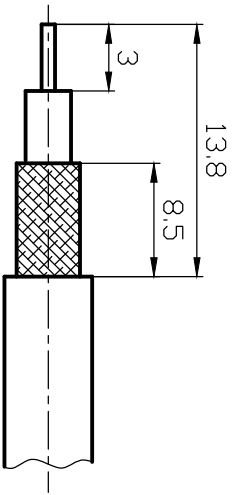
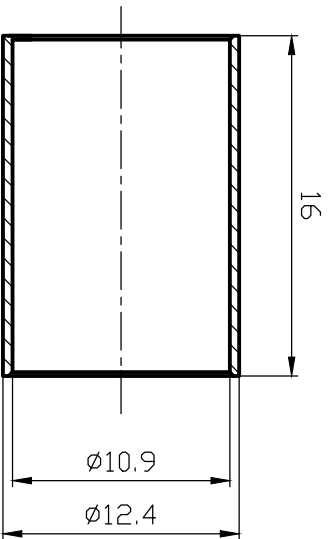
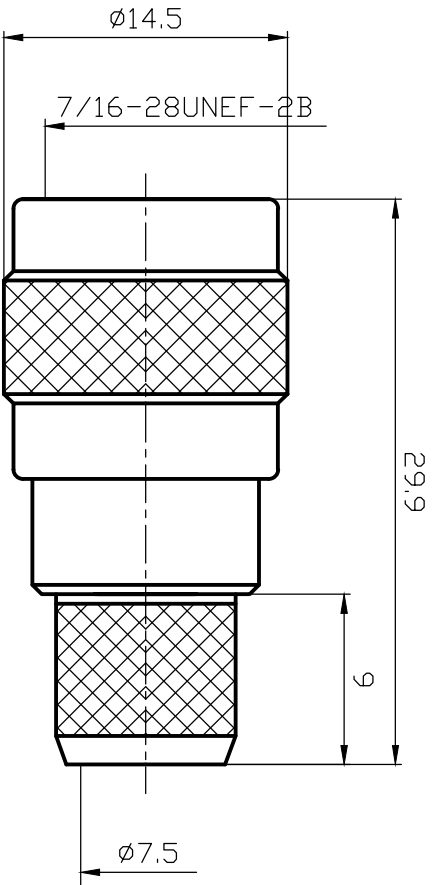


REVISIOND		REV	DESCRIPTION	DATE	CEO	APPR
DRAWING NO			CON-3013			

- NOTES:
1. MATERIAL AND PLATING
SHELL,BODY=BRASS,NICK PLATED;
CONTACT=FEMALE BERYLLIUM-OR TIN BRONZE,GOLD PLATED;
INSULATOR=PTFE;
 2. DO NOT SCALE THIS DRAWING.
 3. UNLESS OTHERWISE SPECIFIED, ALL DIMENSIONS ARE AFTER PLATING.
 4. ROHS COMPLIANT
 5. CHARACTERISTIC IMPEDANCE:50Ω
 6. FREQUENCY RANGE:0~6GHz
 7. WORKING VOLTAGE:500VRMS
 8. DIELECTRIC WITHSTANDING VOLTAGE:1500VRMS
 9. VSWR:1.45 (0~6G)
 10. INSULATOR RESISTANCE:5000 MEGOHMS MIN



cable stripping size

UNLESS OTHERWISE SPECIFIED, DIMENSIONS ARE IN MM
AND TOLERANCES ARE:
2 PLACE DESIMAL 3 PLACE DESIMAL ANGLES
±.015 0.381mm ±.005(0.127mm) ±1°

MATERIAL		DRAWN		DATE		TITLE		SHIREEN INC. 12910 Cloverleaf Center Dr Ste 110 Germantown, MD 20874 USA						
REFERENCE		DRAWN		DATE				SCALE	2.5	1	SHEET	1	OF	1