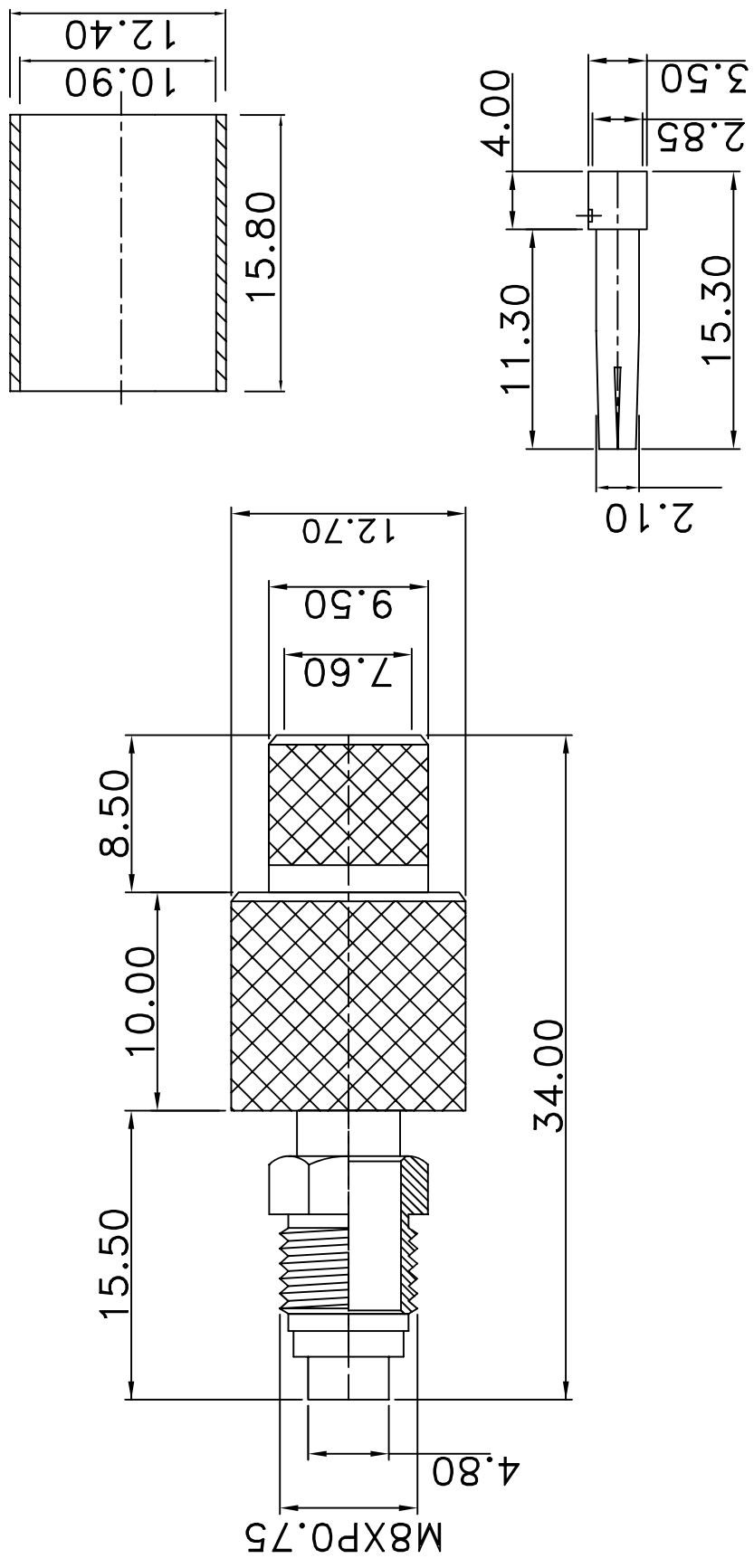


REV	DESCRIPTION	DRAWN	DATE



NO	Description	Qty	Material	Finish
5	DIELECTRIC	1	DELTRIN	NONE
4	NUT	1	BRASS	NICKEL
3	FERRULE	1	BRASS	NICKEL
2	PIN	1	BRASS	GOLD
1	BODY	1	BRASS	NICKEL

UNLESS OTHERWISE SPECIFIED

- REMOVE ALL BURRS.
- BREAK ALL CORNERS & EDGES CO.15 MAX.
- CHAMFER 1ST & LAST THREADS 45°.
- DIAMETERS ON COMMON CENTERS.

TO BE CONCENTRIC WITH DIMENSIONS ARE AFTER PLATING.

\* MAJOR DIMENSION UNLESS OTHERWISE NOTED TOLERANCES

0.5-6	±0.2
6-30	±0.4
30-120	±0.6
120-315	±1.0
ANGLES	±1°

SCALE 9/2 UNIT MM

APPROVED

CHECKED

DRAWN

DRAWN DATE

SHIREEN INC.  
12910 Cloverleaf Center Dr Ste 110  
Germantown, MD 20874 USA

TITLE FME FEMALE FOR RFC400

DRAWING NO. CON-3057

REV A

FILE NO.