

Features

- LO/RF: 100-1700MHz
- IF: 50-1500MHz
- LO Level: +17dBm
- Conversion Loss: 8.5dB
- RF Input: Up to +14dBm
- IP3: +25dBm
- SMA Connectors

Description

MXR-17H is a passive double balanced mixer, which operates with LO drive level range of +14dBm to +20dBm.

Picture



Electrical Specifications @ +25°C, LO= +17dBm

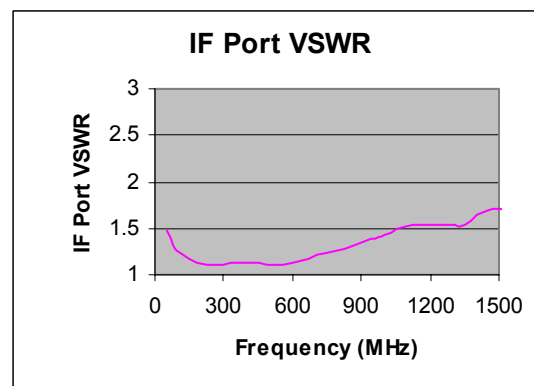
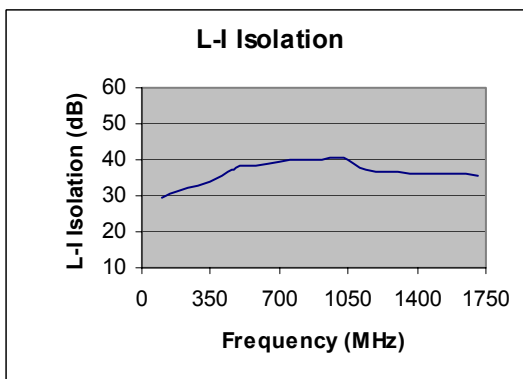
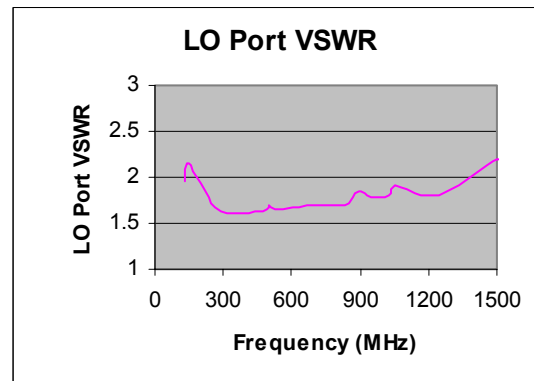
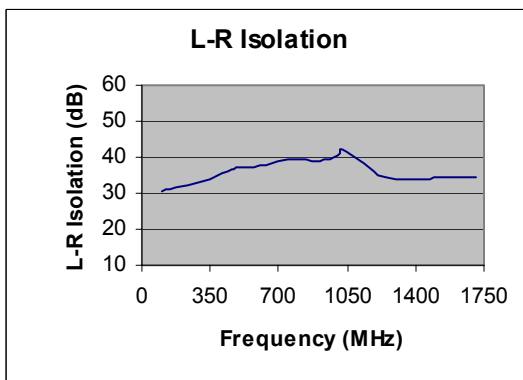
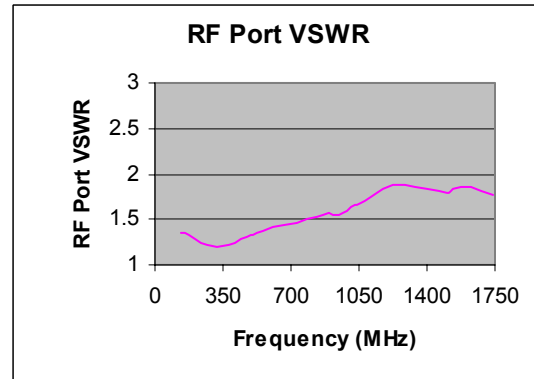
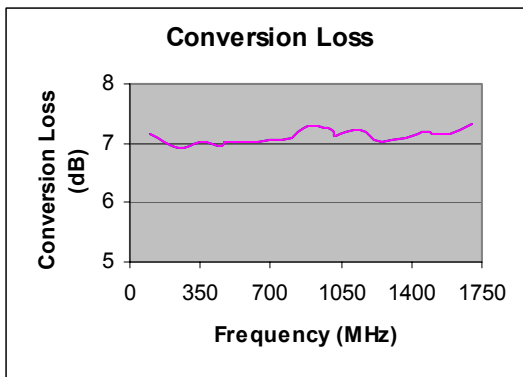
Parameter	Unit	Minimum	Typical	Maximum
Frequency Range				
LO/RF	MHz	100		1700
IF	MHz	50		1500
Conversion Loss	dB		8.5	9.5
LO-RF Isolation				
100-1000 MHz	dB	20	32	
1000-1700MHz	dB	22	36	
LO-IF Isolation				
100-1000MHz	dB	20	32	
1000-1700MHz	dB	22	37	
RF Input Power up to	dBm		+14	
IP3 (Center Band)	dBm		+25	

Level 17

100-1700MHz Frequency Mixer

Typical Performance @ +25 °C

LO = +17dBm





MXR-17H

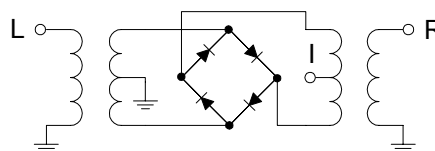
Level 17

100-1700MHz Frequency Mixer

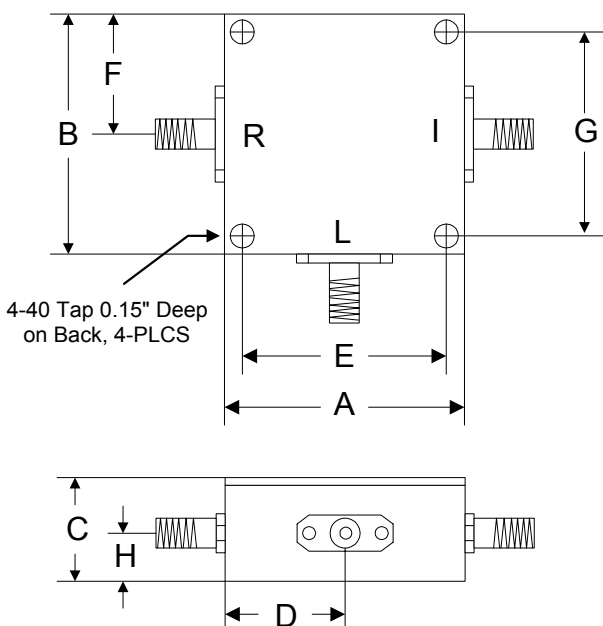
Absolute Maximum Ratings

Parameter	Absolute Maximum
RF Power	+23dBm
Peak IF Current	40mA
Operating Temperature	-40 °C to +85 °C
Storage Temperature	-55 °C to +100 °C

Schematic



Outline



	A	B	C	D	E	F	G	H
Inch	1.250	1.250	0.563	0.625	1.000	0.625	1.000	0.500
mm	31.75	31.75	14.29	15.88	25.40	15.88	25.40	12.70